

Charmline®



LED WORKLIGHT(230V)

MODEL NO: SMD42T

PART NO: 4003625

ASSEMBLY & USER INSTRUCTIONS



ORIGINAL INSTRUCTIONS

DL0423 ISS 3

INTRODUCTION

Thank you for purchasing this CLARKE portable LED worklight which can be used either indoors or outdoors. Before attempting to use this product, please read this manual thoroughly and follow the instructions carefully. In doing so you will ensure the safety of yourself and that of others around you, and you can look forward to your purchase giving you long and satisfactory service.

TECHNICAL INFORMATION

| Model | SMD42T |
|------------------------------|--------------------|
| Model type | L3305SSJ |
| Dimensions (L x W x H) | 58 x 870 x 1720 mm |
| Weight | 3.5 kg |
| Tilt adjustment | -90 to +90 degrees |
| Light Source | SMD LED array |
| Operating Temperature | -20 to + 50oC |
| Input power | 21 W |
| Light Output (luminous flux) | 1650 @ 1m (lumens) |
| Fuse Rating | 3 A |
| Power Supply | 230V 50 Hz |
| Insulation Class | II |
| IP Rating | IP54 |
| Energy Efficiency Class | A+ |
| Efficiency | 80 Lm/W |
| Colour Temperature | 6500 K |
| Weighted Energy Consumption | 21 kWh/1000 h |
| Life expectancy of LED | 20,000 hours |

SAFETY PRECAUTIONS

1. This worklight must not be immersed in water.
2. Do not look directly into the lamp when switched on as this can damage the eyes.
3. If used with an extension cable always ensure that the extension cable is fully unwound.
4. Do not use this worklight if it has a broken lens, casing or damaged cable.
5. Always unplug the worklight before moving it or performing maintenance. Do not touch the lamp when your hands are wet.
6. Do not attempt to disassemble or repair the worklight.
7. Do not leave the worklight unattended when switched on. Always unplug the worklight when it is not in use.
8. Never unplug by holding the cable. Unplug by holding the plug.
9. Never use the worklight if the cable or plug are damaged.
10. When assembling the tripod, ensure that the ground is level and firm.
11. Take extra care not to push or knock the tripod over when fully extended.
12. Ensure the lamp is a safe distance from other objects in the working space.

GUARANTEE

This product is guaranteed against faulty manufacture for a period of 12 months from the date of purchase. Please keep your receipt which will be required as proof of purchase.

This guarantee is invalid if the product is found to have been abused or tampered with in any way, or not used for the purpose for which it was intended.

Faulty goods should be returned to their place of purchase, no product can be returned to us without prior permission. This guarantee does not effect your statutory rights.

ENVIRONMENTAL RECYCLING POLICY

Through purchase of this product, the customer is taking on the obligation to deal with WEEE in accordance with the WEEE regulations in relation to the treatment, recycling, recovery & environmentally sound disposal of the WEEE.

This means that this product must not be disposed of with general household waste. It must be disposed of according to the laws governing Waste Electrical and Electronic Equipment (WEEE) at a recognised disposal facility

ELECTRICAL CONNECTIONS



WARNING! READ THESE ELECTRICAL SAFETY INSTRUCTIONS THOROUGHLY BEFORE CONNECTING THE PRODUCT TO THE MAINS POWER SUPPLY.

Before switching the product on, make sure that the voltage of your electricity supply is the same as that indicated on the rating plate. This product is designed to operate on 230VAC 50Hz. Connecting it to any other power source may cause damage.

This product may be fitted with a non-rewireable plug. If it is necessary to change the fuse in the plug, the fuse cover must be refitted. If the fuse cover becomes lost or damaged, the plug must not be used until a suitable replacement is obtained.

If the plug has to be changed because it is not suitable for your socket, or due to damage, it should be cut off and a replacement fitted, following the wiring instructions shown below. The old plug must be disposed of safely, as insertion into a mains socket could cause an electrical hazard.

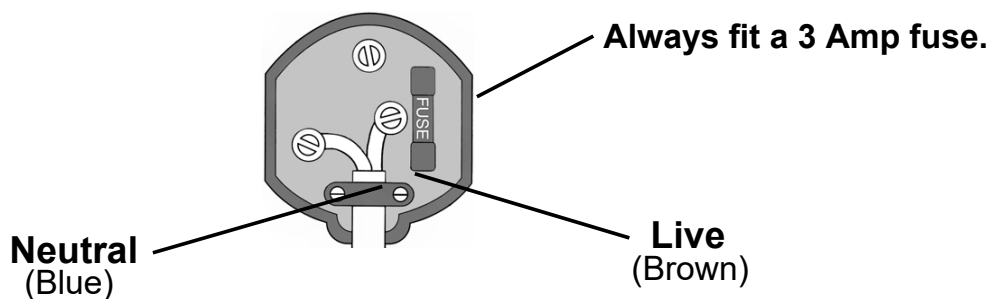


WARNING! THE WIRES IN THE POWER CABLE OF THIS PRODUCT ARE COLOURED IN ACCORDANCE WITH THE FOLLOWING CODE: BLUE = NEUTRAL / BROWN = LIVE

If the colours of the wires in the power cable of this product do not correspond with the markings on the terminals of your plug, proceed as follows.

- The wire which is coloured **Blue** must be connected to the terminal which is marked **N** or coloured **Black**.
- The wire which is coloured **Brown** must be connected to the terminal which is marked **L** or coloured **Red**.

Plug must be BS1363/A approved.



Ensure that the outer sheath of the cable is firmly held by the clamp

We strongly recommend that this machine is connected to the mains supply via a Residual Current Device (RCD).

If in any doubt, consult a qualified electrician. DO NOT attempt any repairs yourself.

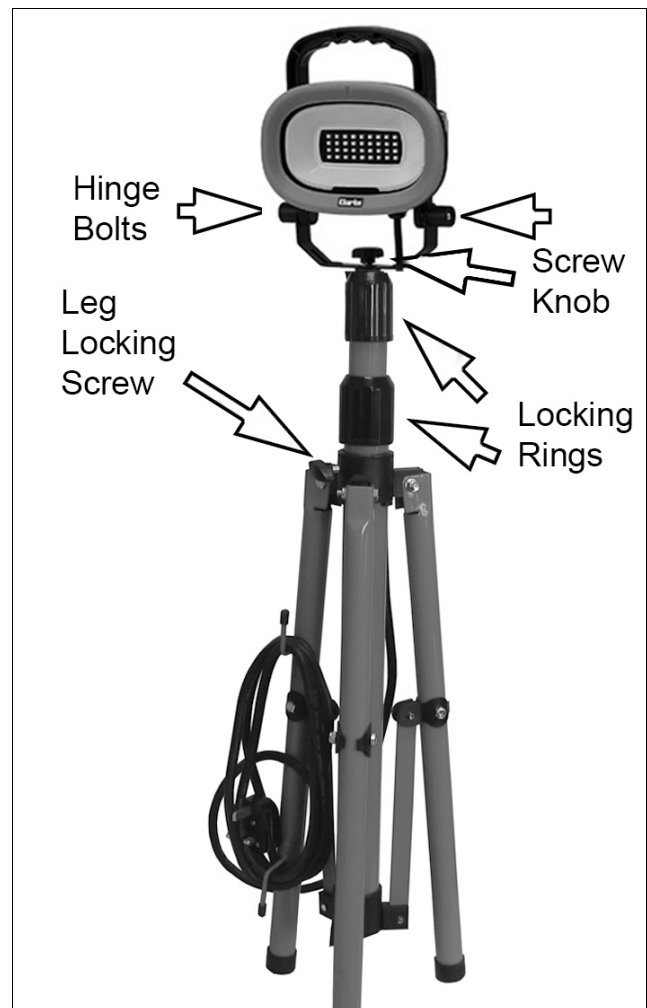


This symbol indicates that this is a Class II product, and does not require an earth connection.

ASSEMBLY & MOUNTING

The tripod stand is supplied fully assembled.

1. Pull the legs apart to erect the tripod and set in position with the leg locking screw.
2. Adjust the height of the tripod column by twisting the locking rings anti-clockwise to release, and sliding the tubes to the required height before twisting clockwise to lock.
3. Attach the worklamp to the column by securing with the screw knob.
 - The worklamp can be swivelled if required by loosening the knob.
4. Tighten the hinge bolts on either side of the lamp to set the angle of elevation as required.



CARE & STORAGE

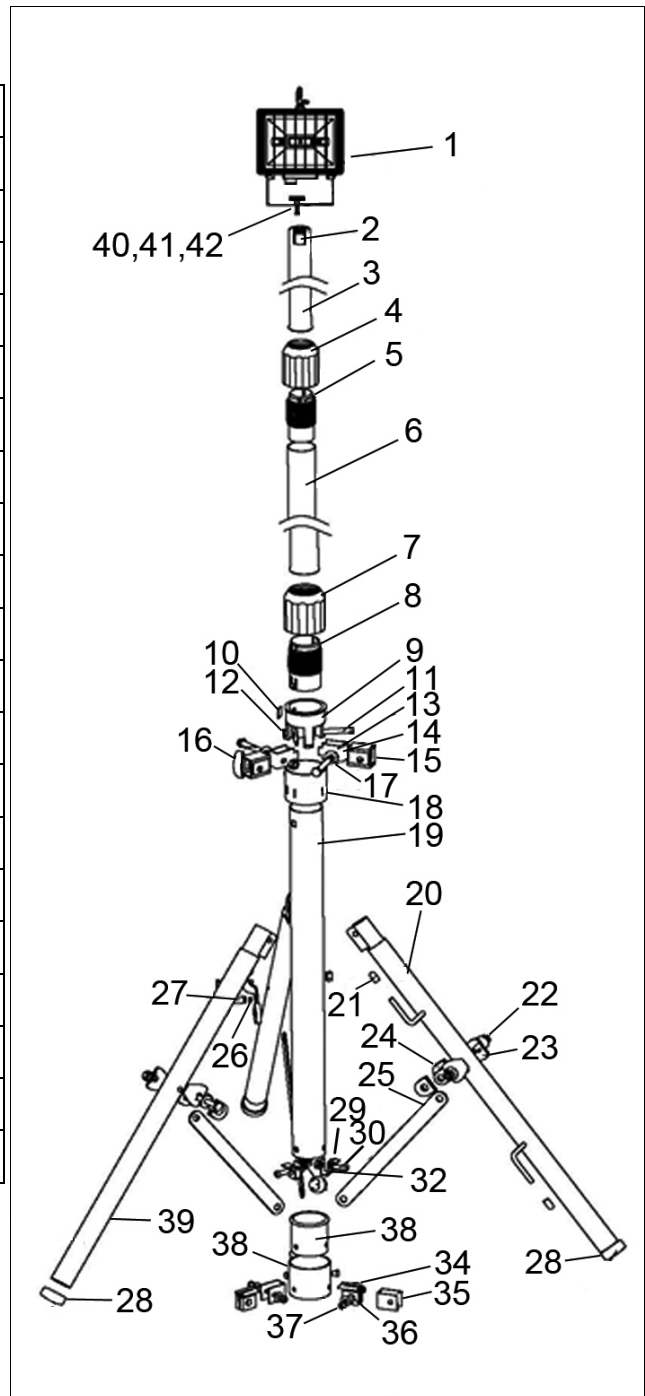
1. When not in use, switch off & unplug from the power supply. Coil the cable around the storage hooks provided on the tripod for tidy storage.
2. Store this product in a secure, dry place, out of the reach of children. DO NOT leave it exposed to the elements and avoid direct sunlight, direct heat, rain/moisture etc.
3. Keep the external surfaces clean. Avoid impact damage & do not allow this product to come into contact with abrasive or corrosive materials.
4. Do not use solvents, thinners or alcohol for cleaning, as these chemicals will damage the finish. With the lamp unplugged from the power supply, use a dry cloth to wipe over the lamp components.

5. Only use extension leads that are of an appropriate power rating and suitable for the work environment. Inspect the extension lead regularly and replace if damaged.
6. The LED light source (Epistar LED chip) cannot be replaced but has a life expectancy of approximately 20000 hours.
7. Never use unauthorised accessories or attachments which can cause personal injury or damage to the product.
8. Do not attempt to repair or modify this product or attempt any electrical repair yourself. Consult the Clarke Service Department on 020 8988 7400.

REPLACEMENT TRIPOD PARTS

| | |
|----|----------------|
| 1 | Lamp Head |
| 2 | Top End |
| 3 | Upper Tube |
| 4 | Locking Ring |
| 5 | Screwed Tube |
| 6 | Middle Tube |
| 7 | Locking Ring |
| 8 | Screwed Tube |
| 9 | Washer |
| 10 | Washer |
| 11 | Outer Hex Bolt |
| 12 | Locknut |
| 13 | Fixing Bracket |
| 14 | Flat Washer |
| 15 | Plastic Cover |
| 16 | Oval Screw |
| 17 | Spring Washer |
| 18 | Connector |
| 19 | Stand Tube |
| 20 | Leg with Hook |
| 21 | Hook End Cap |

| | |
|----|----------------|
| 22 | Bolt |
| 23 | Bracket |
| 24 | Packer |
| 25 | Connecting Arm |
| 26 | Open Washer |
| 27 | Bolt |
| 28 | End cap |
| 29 | Connection |
| 30 | Pan Head Screw |
| 31 | Nut |
| 32 | Flat Washer |
| 33 | Washer |
| 34 | Plastic Cover |
| 35 | Adapting Piece |
| 36 | Inner Bolt |
| 37 | Cross Screws |
| 38 | End Connection |
| 39 | Leg |
| 40 | Screw Knob |
| 41 | Spring Washer |
| 42 | Flat Washer |



DECLARATION OF CONFORMITY



Hemroll Street, Epping, Essex, CM16 4LG

DECLARATION OF CONFORMITY

This is an important document and should be retained.

We hereby declare that this product(s) complies with the following legislation:

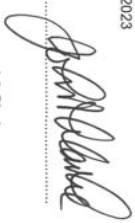
- The Ecodesign for Energy-Related Products Regulations 2010
- Electromagnetic Compatibility Regulations 2016
- Electrical Equipment (Safety) Regulations 2016
- The Restriction of the Use of Certain Hazardous Substances in Electrical and Electronic Equipment Regulations 2012

The following standards have been applied to the product(s):

- EN 13032-4:2015, IEC/TR 61341-2:2010, IEC 62717:2014+A1:2015+A2:2019,
- EN IEC 55015:2019+A11:2020, EN IEC 61000-3-2:2019, EN 61000-3-3:2013/A1:2019,
- EN 61547:2009, EN 60598-1:2015+A1:2018, EN 60598-2-4:2018, EN 62493:2015, ISO 17075:2017
- IEC 62321-1:2013, IEC 62321-2:2013, IEC 62321-3-1:2013, IEC 62321-4:2013+AAMD1:2017 GSV,
- IEC 62321-5:2013, IEC 62321-6:2015, IEC 62321-7-1:2015, IEC 62321-7-2:2017, IEC 62321-8:2017

The technical documentation required to demonstrate that the product(s) meet(s) the requirement(s) of the aforementioned legislation has been compiled and is available for inspection by the relevant enforcement authorities.

The UKCA mark was first applied in: 2023

Product Description: LED Work Light 230V
Model Number(s): SMD42C, SMD42T, SMD84T
Serial/Batch Number: Refer to product/packaging label
Date of Issue: 16/02/2023
Signed: 

J.A. Clarke
 Director



Fitzwilliam Hall, Fitzwilliam Place, Dublin 2

DECLARATION OF CONFORMITY

This is an important document and should be retained.

We hereby declare that this product(s) complies with the following legislation:


- 2009/125/EC Ecodesign Directive
- 2014/30/EU Electromagnetic Compatibility Directive
- 2014/39/EU Low Voltage Directive
- 2011/65/EU Restriction of the Use of certain Hazardous Substances in Electrical and Electronic Equipment (RoHS) Directive

The following standards have been applied to the product(s):

- EN 13032-4:2015, IEC/TR 61341-2:2010, IEC 62717:2014+A1:2015+A2:2019,
- EN IEC 55015:2019+A11:2020, EN IEC 61000-3-2:2019, EN 61000-3-3:2013/A1:2019,
- EN 61547:2009, EN 60598-1:2015+A1:2018, EN 60598-2-4:2018, EN 62493:2015, ISO 17075:2017
- IEC 62321-1:2013, IEC 62321-2:2013, IEC 62321-3-1:2013, IEC 62321-4:2013+AAMD1:2017 GSV,
- IEC 62321-5:2013, IEC 62321-6:2015, IEC 62321-7-1:2015, IEC 62321-7-2:2017, IEC 62321-8:2017

The technical documentation required to demonstrate that the product(s) meet(s) the requirement(s) of the aforementioned legislation has been compiled and is available for inspection by the relevant enforcement authorities.

The CE mark was first applied in: 2017

Product Description: LED Work Light 230V
Model Number(s): SMD42C, SMD42T, SMD84T
Serial/Batch Number: Refer to product/packaging label
Date of Issue: 16/02/2023
Signed: 

J.A. Clarke
 Director

A SELECTION FROM THE VAST RANGE OF

Clarke®

QUALITY PRODUCTS



AIR COMPRESSORS
From DIY to industrial, Plus air tools, spray guns and accessories.

GENERATORS
Prime duty or emergency standby for business, home and leisure.

POWER WASHERS
Hot and cold, electric and engine driven - we have what you need

WELDERS
Mig, Arc, Tig and Spot.
From DIY to auto/industrial.

METALWORKING
Drills, grinders and saws for DIY and professional use.

WOODWORKING
Saws, sanders, lathes, mortisers and dust extraction.

HYDRAULICS
Cranes, body repair kits, transmission jacks for all types of workshop use.

WATER PUMPS
Submersible, electric and engine driven for DIY, agriculture and industry.

POWERTOOLS
Angle grinders, cordless drill sets, saws and sanders.

STARTERS/CHARGERS
All sizes for car and commercial use.

PARTS & SERVICE:

0208 988 7400

Parts Enquiries

Parts@clarkeinternational.com

Servicing & Technical Enquiries

Service@clarkeinternational.com

SALES: UK 01992 565333 or Export 00 44 (0)1992 565335

Clarke® INTERNATIONAL Hemnall Street, Epping, Essex CM16 4LG
www.clarkeinternational.com